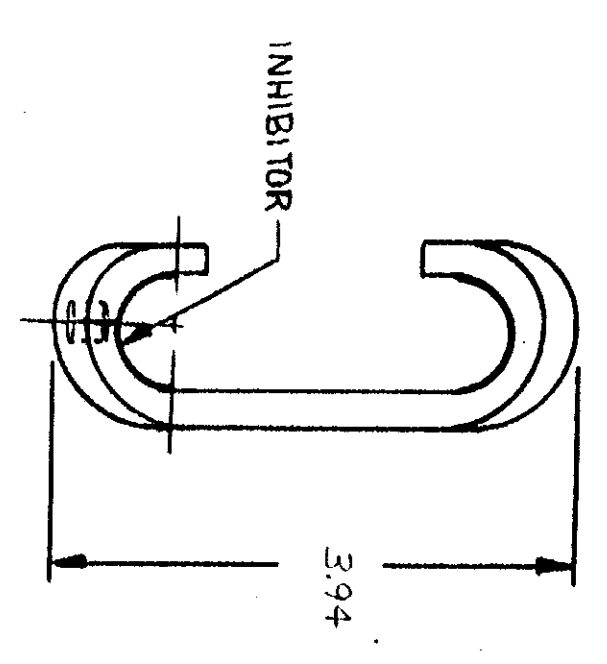
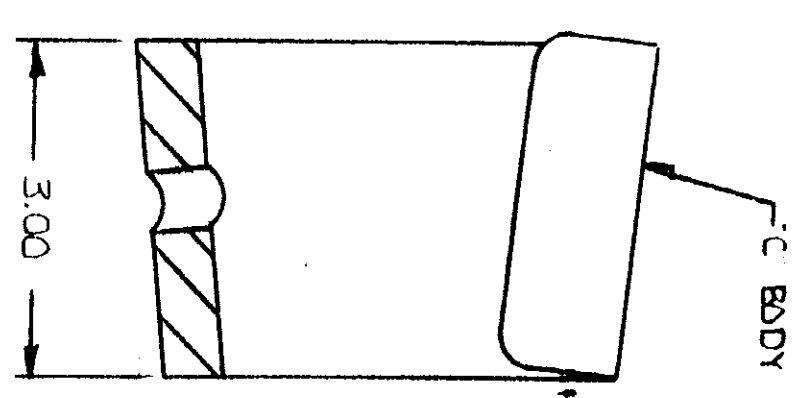
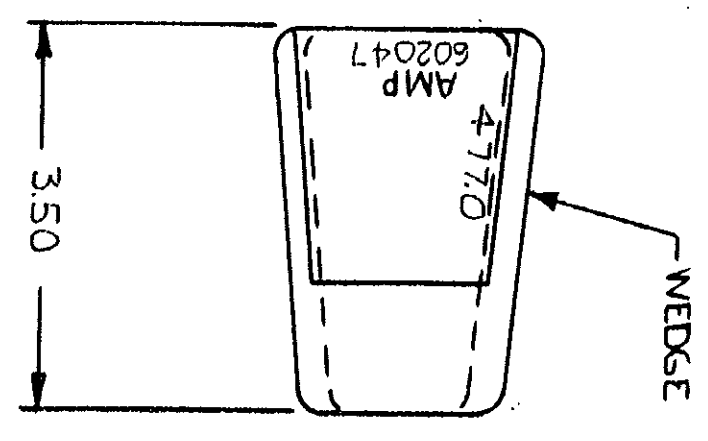
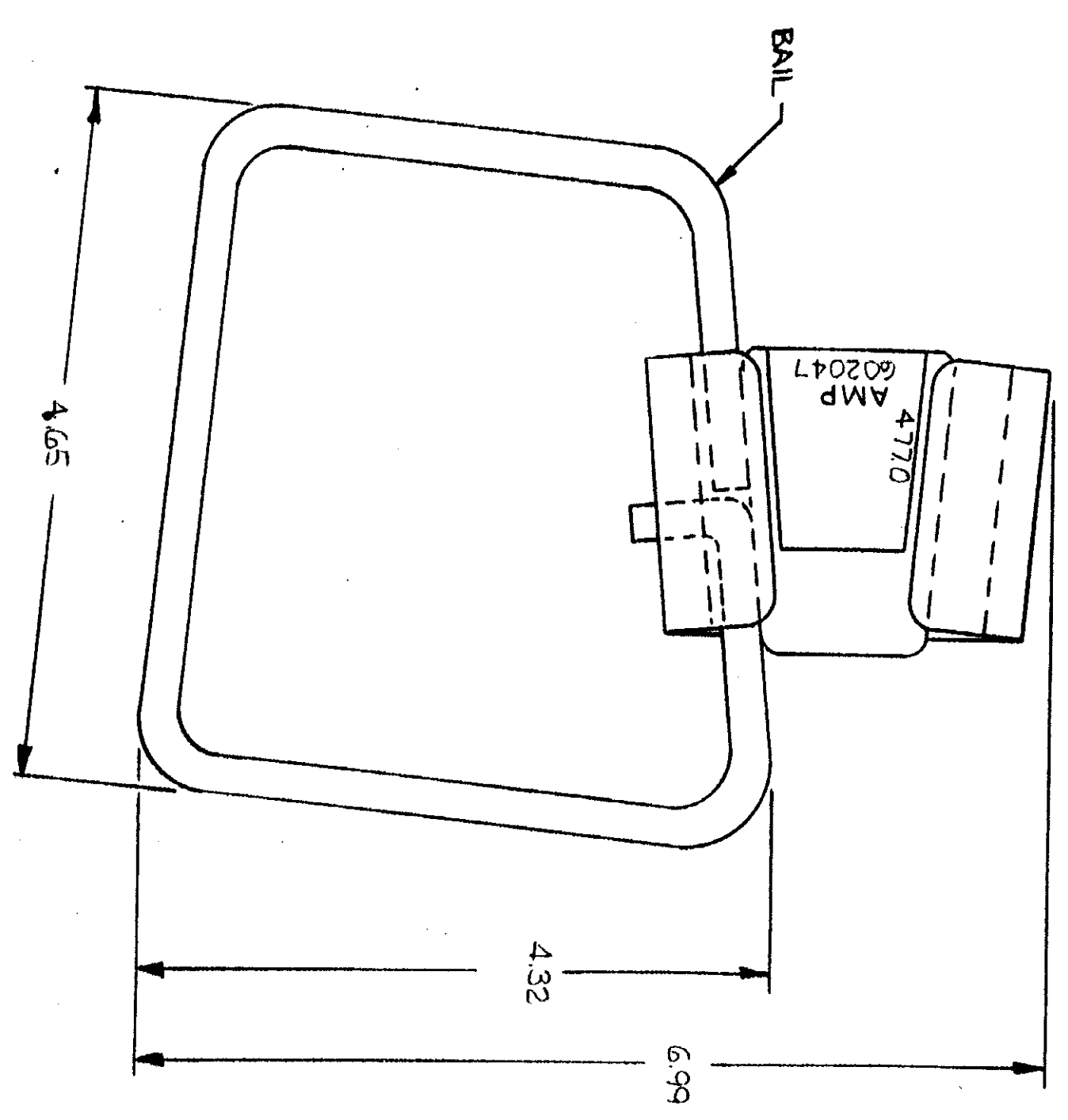


UNPUBLISHED AND NOT LISTED BY AMP INCORPORATED, LANRISTON, PA.
 THIS DRAWING IS THE PROPERTY OF AMP INCORPORATED AND IS NOT TO BE REPRODUCED OR COPIED IN ANY MANNER WITHOUT THE WRITTEN PERMISSION OF AMP INCORPORATED.



LOG SHEET	AK 26
REVISIONS	
DATE APPROVED	5/7/75 JLB
DESCRIPTION	65-1140
ZONE	NAS
DATE	5-7-75

UNLESS OTHERWISE SPECIFIED DIMENSIONS ARE IN INCHES TOLERANCES ON: DECIMALS ±.02 ANGLES ±.030°		
MATERIAL (SEE TABLE)		
FINISH (SEE TABLE)		
1	BAIL	COPPER (ASTM B2), TIN PL. (MIL-T-10127)
1	WEDGE	ALUM. (ALMAG 35 ALLOY) CLEANED
1	"C" BODY	ALUM. ALLOY (30-A-250/11) CLEANED
1	DESCRIPTION	MATERIAL & FINISH
CONTRACT NO.		
DR	Joe DiGiorgio	5-6-75
CHK	Steve Ball	5-7-75
APPD	C. Bessler	5/21/75
APPD	C. Bessler	5/21/75
APPD	C. Bessler	5/21/75
DESIGN APPD		
OTHER APPD		
NAME		AMP INCORPORATED Lansburg, Pa.
AMPACT STIRRUP ASSY		
SIZE	CODE IDENT. NO. NUMBER	602047
SCALE	N.T.S.	
SHEET		

AMP 1471-6 (1-73) CUSTOMER DRAWING